

## Webster Products



PTO Driven Power Units



### **COMPLETE HYDRAULIC POWER UNIT**

**Reservoir / Relief / Site Glass - Included**

## PTO Driven Power Units

### Complete Hydraulic Unit With Built-in Relief Valve, Reservoir, and Site Glass

Webster PTO units are tractor-driven, completely self-contained hydraulic power supply systems for agricultural applications. They mount on a tractor PTO shaft to provide hydraulic power for front end loaders, snow plows, mowers, spreaders, log splitters, post hole augers, and other hydraulic tools.

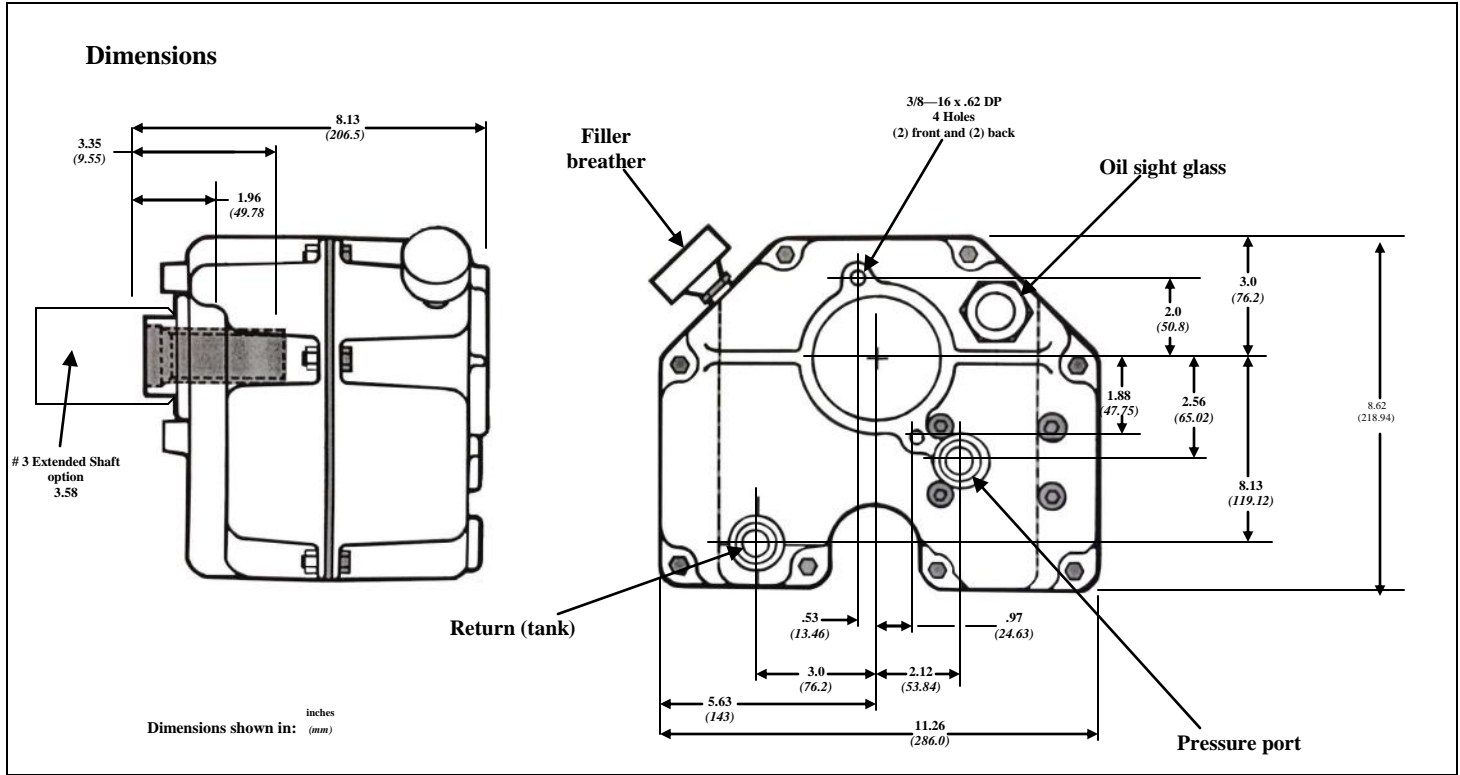
Available in 540 and 1000 rpm models, Webster PTO units feature lightweight high strength aluminum alloy housings, and hardened steel shafts & gears. At the heart of the PTO is a proven Webster YC Series pressure balanced hydraulic pump with a built-in relief valve, set at 2500 psi (172bar) max. Other standard features include reservoir, filler/breather and sight glass to insure proper fluid level.



#### Specifications

<b>Operating Pressures</b>	2500 psi (172 bar) continuous
<b>Recommended Operating Speeds</b>	540 or 1000 rpm
<b>Mounting</b>	Torque arm type mount
<b>Input Drive</b>	6 Tooth female spline (540 rpm) 20 & 21 Tooth female spline (1000 rpm)
<b>Input Drive Rotation</b>	Counter-clockwise (when viewed from shaft end)
<b>Porting Options</b>	1/2" NPTF pressure and 3/4" NPTF return 3/4"-16 (SAE8) pressure and return 3/4"-16 (SAE 8) pressure, 1-1/16"-12 (SAE 12) return
<b>Relief Valve</b>	Set at 2350 psi (162 bar)
<b>Reservoir Capacity</b>	6 quarts (5.7 liter)
<b>Weight</b>	25 pounds (11.3Kg)

## PTO Driven Power Units



### Order Code

#### Standard Models:

- \* PTO-04-054-01-01-AL25.0  
Mfg. Code 163Y1950
- \* PTO-04-100-01-02-SL25.0  
Mfg. Code 163Y1951
- PTO-05-054-02-01-AL23.5  
Mfg. Code 163Y1952 & AH129101
- PTO-06-100-02-02-AL23.5  
Mfg. Code 163Y1953 & AH132362
- PTO-09-054-03-01-AL23.5  
Mfg. Code 163Y1954
- PTO-09-100-03-02-AL23.5  
Mfg. Code 163Y1955
- \* PTO-04-100-01-02-SL25.0  
Mfg. Code 163Y1956

\* No Sight Gauge

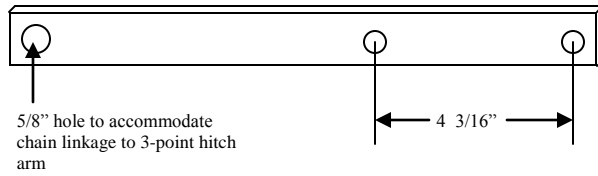
### Example Model Code

**PTO - 04 - 054 - 01 - 01 - A - L - 25.0**

	1	2	3	4	5	6	7	8
<b>1</b>	<b>Application</b>							
	PTO	Power take off driven pump						
<b>2</b>	<b>Output flow</b>							
	04	4 gpm (15.1L/min)						
	05	5.5 gpm (20.8L/min)						
	06	6.2 gpm ( 23.4 L/min)						
	09	8.8 gpm (33.3 L/min)						
<b>3</b>	<b>PTO Speed</b>							
	054	540 rpm						
	100	1000 rpm						
<b>4</b>	<b>Porting</b>							
	01	1/2" NPTF pressure 3/4" NPTF return						
	02	3/4"-16 UNF 2B (1/2" tube/SAE8) pressure and return						
	03	3/4"-16 UNF 2B (1/2" tube/SAE8) pressure and 1-16"-12 UNF 2B (3/4" tube/SAE 12) return						
<b>5</b>	<b>Input Drive Shaft</b>							
	01	6 Tooth female spline						
	02	21 Tooth female spline						
	03	20 Tooth extended female spline *						
<b>6</b>	<b>Design Modifications</b>							
	A	Standard features						
	S	Special features						
<b>7</b>	<b>Rotation (Viewed from input shaft)</b>							
	L	Counter-clockwise						
<b>8</b>	<b>Relief Valve Setting</b>							
	23.5	2350 psi (162 bar)						
	25.0	2500 psi (172 bar)						

Notes: Unit will require Torque arm connected (chain) to an arm on the 3 point hitch to accommodate approximately 70 Ft. Lbs of force. Recommend 3/8" x 1 1/2" x 16" bar stock Drawing on back page. This accessory to be offered soon

Recommended Torque arm construction : 3/8" x  
1 1/2" x 16" steel bar stock



2 - 7/16" holes to mount torque arm to power unit, with 3/8"-16 x 1 1/4" bolts and washers



QCC can accept no responsibility for possible errors in catalogs, brochures and other published material. QCC reserves the right to alter its product without notice. This also applies to product already on order provided that such alterations can be made without subsequential changes being necessary in specification already agreed.

7315 West Wilson Avenue  
Harwood Heights, IL 60706  
Phone: 708-887-5400  
Website: [www.qualitycontrolcorp.com](http://www.qualitycontrolcorp.com)

Oct. 2014